

FUND: General Fund
DEPARTMENT: Fire
Description and Responsibilities

Blowing Rock Fire & Rescue is chartered as a private organization distinct and separate from the Town. However, in recognition of the vital public importance of the services, the Town shares in funding the staffing and operations. The Town owns the centrally located Station #1 in which Blowing Rock Fire & Rescue is housed, Blowing Rock Fire & Rescue owns a sub-station located west of the Town on US 221, and a sub-station located east of town on Aho Road. Both sub-stations are operated and fully funded by Blowing Rock Fire & Rescue.

The Town funds most of the career staffing and Blowing Rock Fire & Rescue supports in partially reimbursing the Town for employee costs as well as contributing to the debt service for Station 1 from district revenues. Blowing Rock Fire & Rescue provides fire inspections, public education programs, and emergency response of all types with 24-hour coverage. With the ability to transport as needed, the medical response is normally initial treatment at the paramedic level of care. The roster has many certified Rescue Technicians, certified Firefighters, EMT's and Paramedics. Blowing Rock Fire & Rescue provides fire and rescue service to the Town of Blowing Rock, the Blowing Rock Fire District and the North Caldwell Fire District.

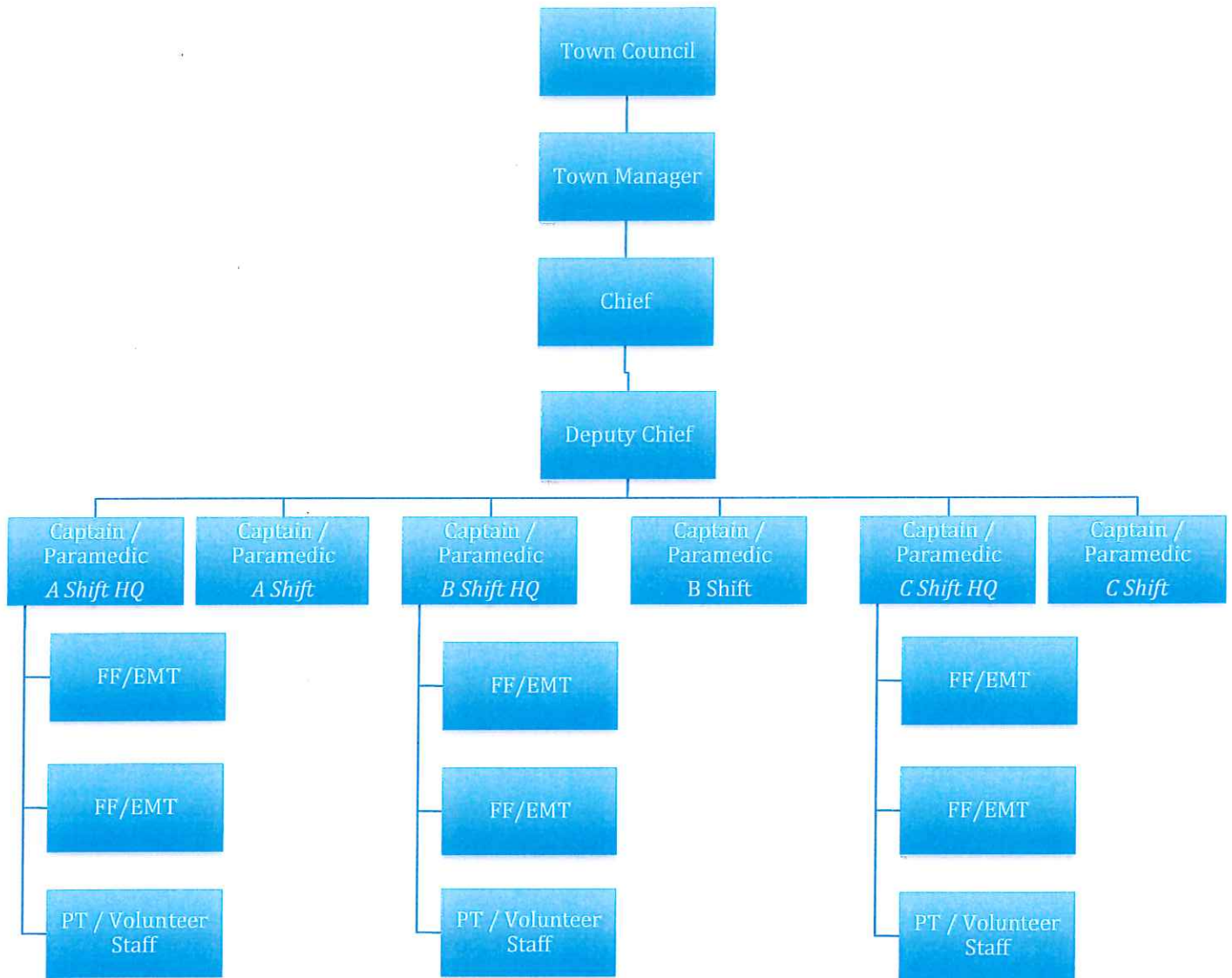
The Property Protection Class rating is a 4 in the city limits and for any property in the district that is within five miles of a station and within 1,000 feet of a rated water supply. Properties in the rural district that are within 5 miles of a fire station are rated as Class 9S. Blowing Rock also provides a 9E rating for properties located more than five but less than six miles from a station. The entire Blowing Rock District is 58 square miles and includes areas in both Watauga and Caldwell County and within the Town of Blowing Rock.

Staffing and Schedules

Fire & Rescue currently employs fourteen individuals on a full-time basis within the Fire Department – a Chief, Deputy Chief, six shift Captain / Paramedics, two Firefighter / Paramedics, four Firefighter / EMTs. The Part-time staffing goal is for one FTE position to be filled 24-hours per day. All individuals provide response for fire, rescue and EMS calls throughout all three coverage areas.

Station #1, located on Valley Boulevard, is staffed 24 hours per day with 3 full-time and one part-time employee while Station #3 is staffed 24 hours with one Captain / Paramedic. Station #2 is partially staffed during daytime hours with Station #1 personnel. The six shift Captains and Firefighter/EMTs work a 24hr-on/48hr-off shift. The Chief and Deputy Chief are typically scheduled from 8 a.m. until 5 p.m., Monday through Friday. All schedules remain flexible for emergency response and seasonal call-volumes.

The following chart depicts the organization of the Fire Department:



GENERAL FUND EXPENDITURES
 DESCRIPTION: FIRE DEPARTMENT
 CODE: 10-10-4340

ACCOUNT NUMBER	DESCRIPTION	2016-17 Actual	2017-18 Actual	2018-19 Adopted	2019-20 Adopted
002	Fire Salaries	367,108	571,289	612,741	618,678
003	Overtime	32,710	38,310	36,000	36,000
004	Part-time Salaries	143,748	68,597	114,000	100,000
005	Part-time FICA Expense	10,997	0	8,721	7,650
005	FICA Expense	39,331	49,225	49,629	50,083
006	Group Insurance	60,393	80,898	107,100	90,300
007	401K	19,159	29,821	32,437	32,734
008	Retirement	53,618	84,919	89,786	99,969
	Personnel Subtotal	727,064	923,058	1,050,414	1,035,414
011	Telephone	4,101	3,356	1,500	1,000
014	Employee Development	65	-	-	-
016	Maint./Repair Buildings/Equip.	13,869	21,813	17,500	18,000 *
017	Maint./Repair Vehicles	-	-	-	-
031	Gasoline/Diesel	8,779	9,331	8,500	10,000
057	Medical Expense (drug testing)	163	228	400	250
213	Utilities (Station #1- Hwy. 321)	20,750	23,275	22,000	24,000
	Operating & Maint. Subtotal	47,727	58,002	49,900	53,250
500	Capital Outlay	-	-	-	-
	Capital Subtotal	-	-	-	-
TOTAL EXPENDITURES		774,791	981,060	1,100,314	1,088,664

* Includes \$2,500 for landscape maint.